



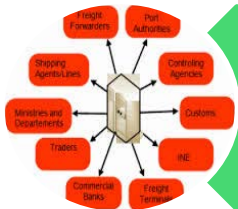
Port Community System – Singapore Experience

Driving Singapore's External Economy

Information on this slide is confidential and strictly for use by IE Singapore officers only. It should not be used or referred to by third parties without prior written consent from IE Singapore.



Singapore – Need for Efficient Trade Facilitation



Port Community System – An Overview



Single Window System - Introduction



Challenges, Benefits & Lessons Learned

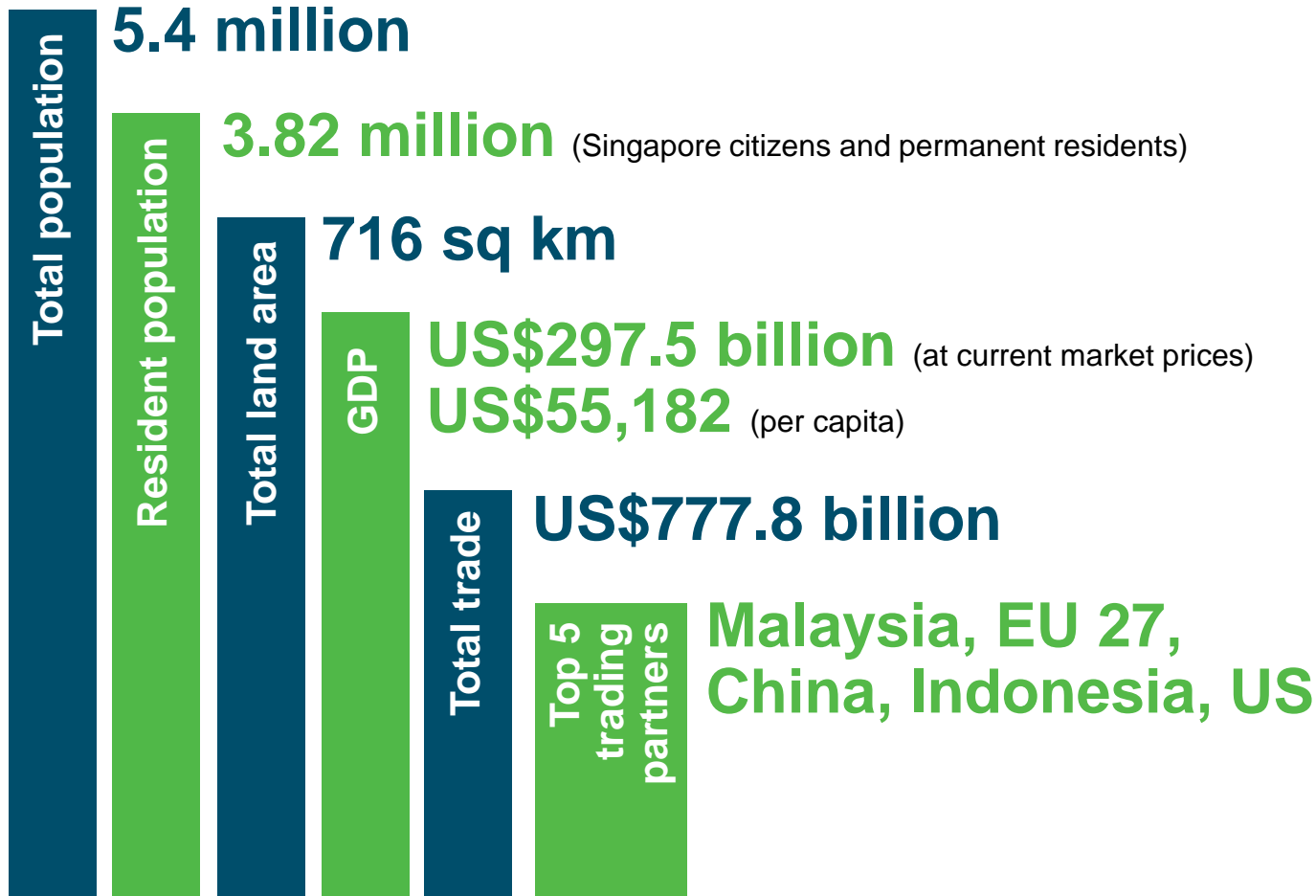
Singapore – Need for Efficient Trade Facilitation

Driving Singapore's External Economy

Information on this slide is confidential and strictly for use by IE Singapore officers only. It should not be used or referred to by third parties without prior written consent from IE Singapore.



Singapore Snapshot 2013

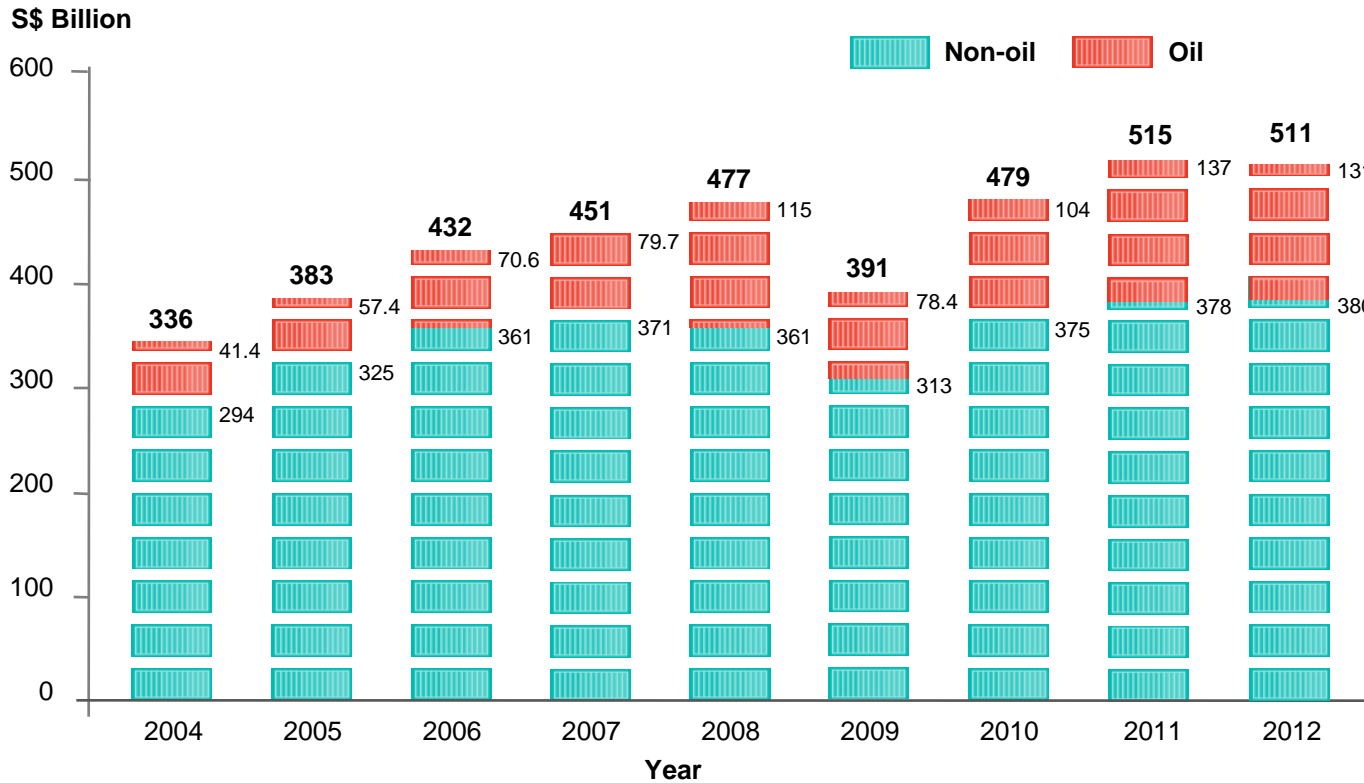


Driving Singapore's External Economy

Information on this slide is confidential and strictly for use by IE Singapore officers only. It should not be used or referred to by third parties without prior written consent from IE Singapore.

Exports are the backbone of Singapore's economy

Total Export of Goods



Top merchandise exporters (2012)

Rank	Countries
1	China
2	The US
3	Germany
4	Japan
5	The Netherlands
6	France
7	Korea, Republic of
8	Italy
9	Russia
10	Belgium
11	The UK
12	Canada
13	Hong Kong
14	Singapore

Source: IE Singapore

Source: UN Statistics, April 2013

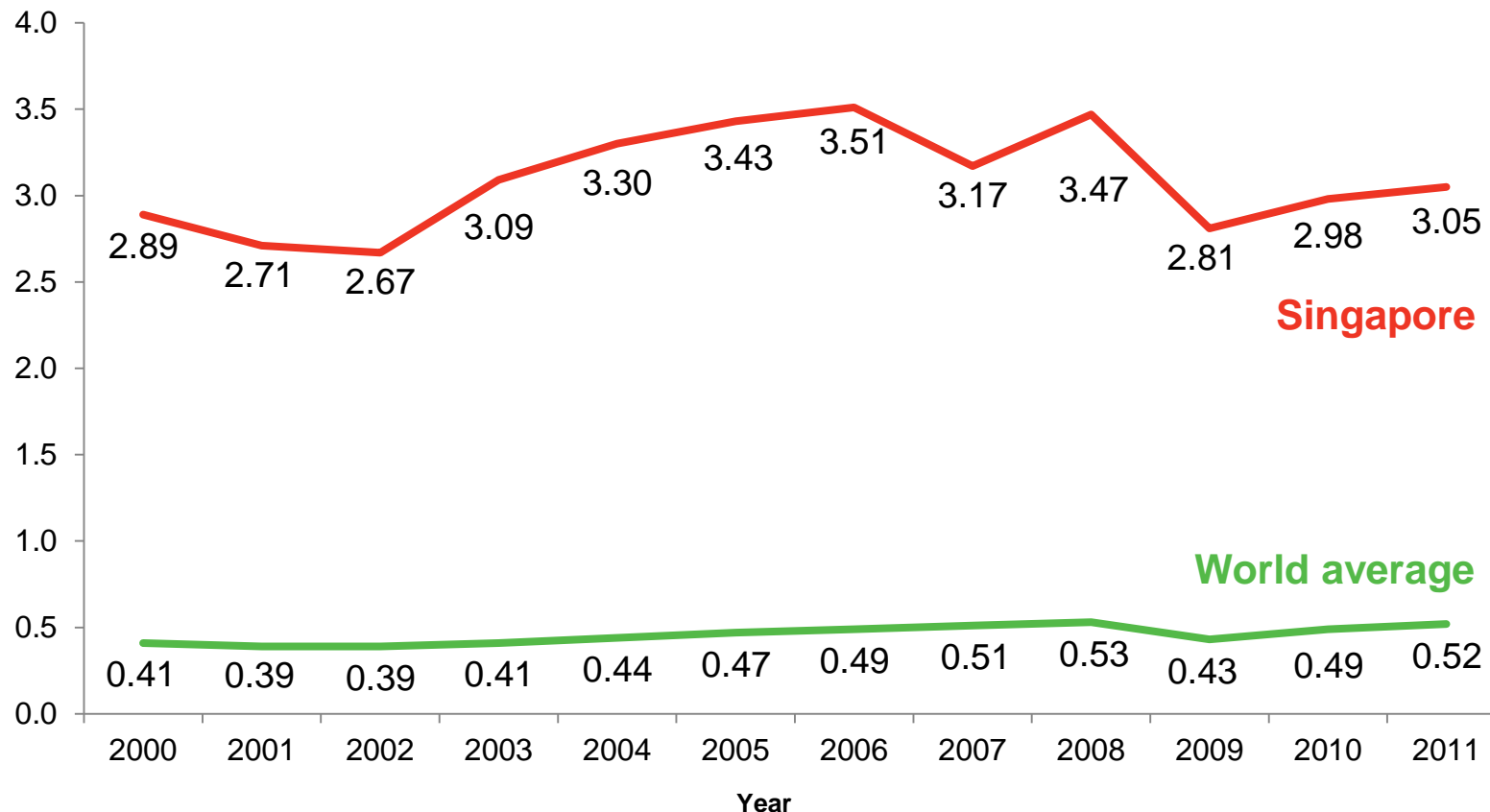
Driving Singapore's External Economy

Information on this slide is confidential and strictly for use by IE Singapore officers only. It should not be used or referred to by third parties without prior written consent from IE Singapore.



Singapore's external trade far outstrips GDP

Trade to GDP ratio



Source: UN Statistics, September 2012
Figures in USD

Driving Singapore's External Economy

Information on this slide is confidential and strictly for use by IE Singapore officers only. It should not be used or referred to by third parties without prior written consent from IE Singapore.

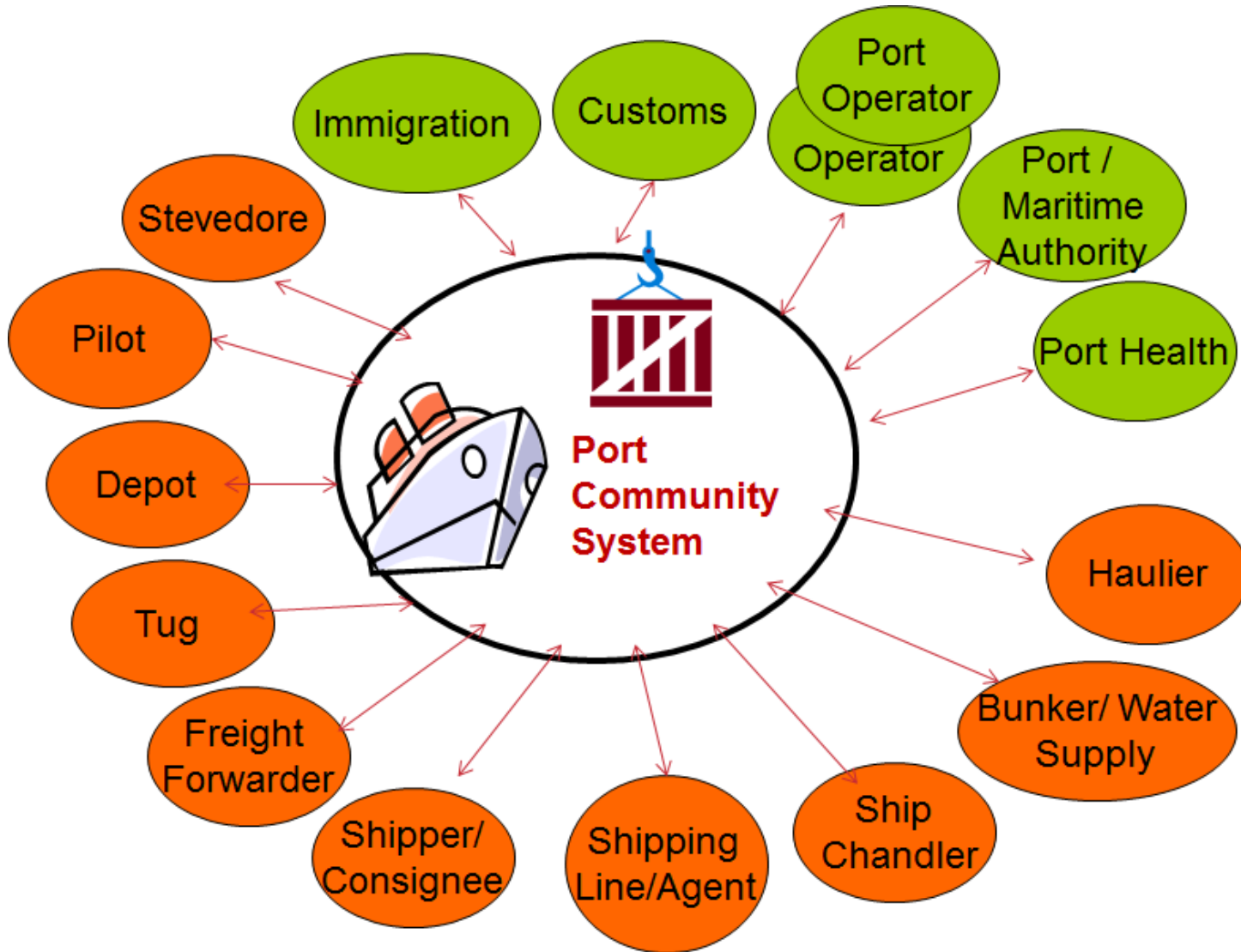
Port Community System

Driving Singapore's External Economy

Information on this slide is confidential and strictly for use by IE Singapore officers only. It should not be used or referred to by third parties without prior written consent from IE Singapore.



The Port Community Stakeholders



Driving Singapore's External Economy

Information on this slide is confidential and strictly for use by IE Singapore officers only. It should not be used or referred to by third parties without prior written consent from IE Singapore.

Copyright 2014 Private & Confidential



Origin of Port Community System

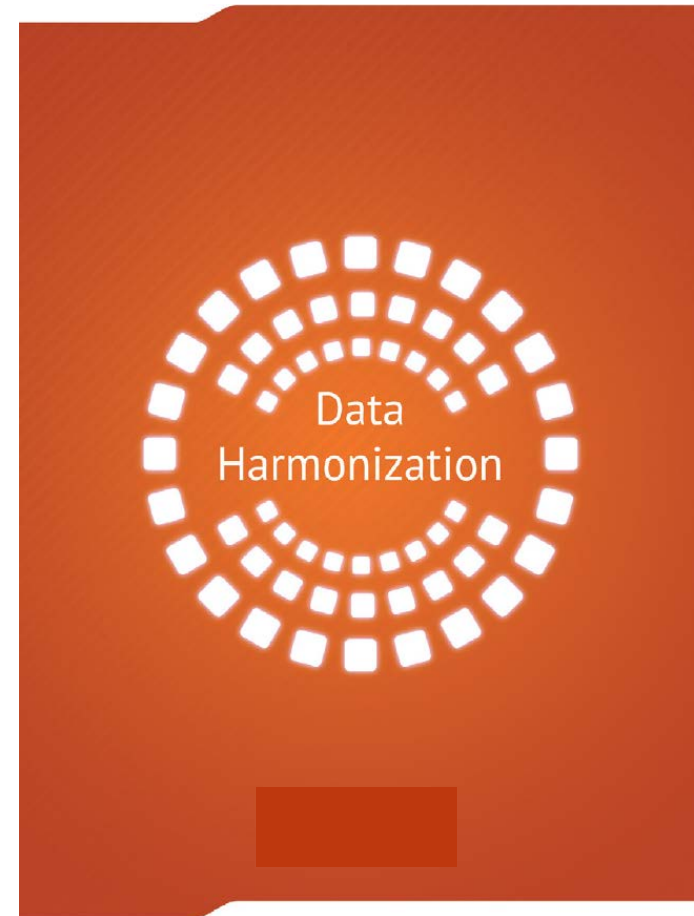
A Port Community System (PCS) is an electronic platform that connects multiple systems operated by a variety of organizations that make up a seaport community

- **Port computerization started way back in 1984**
- **In depth study (Value Chain Analysis) was undertaken to study the operations of the Port activities and the stakeholder needs**
- **First version of a transactional PCS – PortNet was launched in 1989**
- **Same year the National Single Window – TradeNet was also launched**

DATA HARMONIZATION

UNECE Recommendation No. 34

“Following the simplification and standardisation process described in the Recommendation guidelines, a government should be able to reduce the regulatory and official information requirements through the elimination or duplication of submissions and the removal of redundant data elements. The outcome of the process should be a more efficient and effective exchange of information between Trade and Government.”



UNECE Recommendation No. 34
“Data Simplification and Standardisation for International Trade”

Integrated Port - Port of Singapore

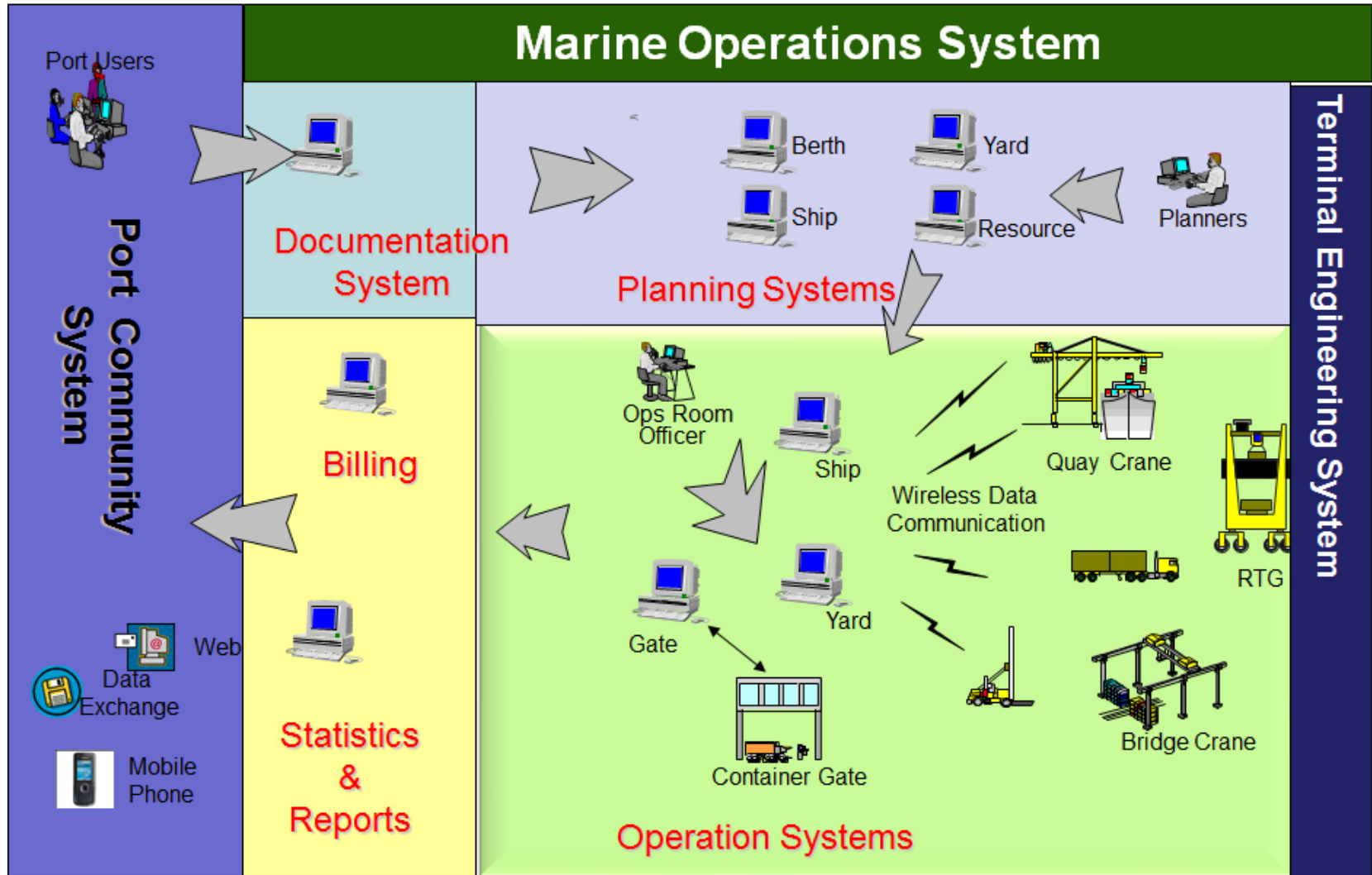


Driving Singapore's External Economy

Information on this slide is confidential and strictly for use by IE Singapore officers only. It should not be used or referred to by third parties without prior written consent from IE Singapore.



Overview of Port Eco Systems



Driving Singapore's External Economy

Information on this slide is confidential and strictly for use by IE Singapore officers only. It should not be used or referred to by third parties without prior written consent from IE Singapore.

PCS Services



Information Services	Document Exchange Services	E-Commerce Services	Other Services
<ul style="list-style-type: none">• General information of port. i.e. infrastructure, calls, etc• Directory of liners, shipping agents, logistics companies, etc• Vessel schedules• Cruises• Import and export procedures, etc	<ul style="list-style-type: none">• Cargo manifest submission• Passenger manifest submission• Customs declarations for import, export and/or transit-related shipments• Berth, channel and pilot application• Hazardous cargo Information• Haulage instructions, etc	<ul style="list-style-type: none">• Electronic invoice• E-payment<ul style="list-style-type: none">- Electronic transfer of funds- Credit card payment, etc	<ul style="list-style-type: none">• Access to Internet• E-Mail facility• Access to other Nets or portals

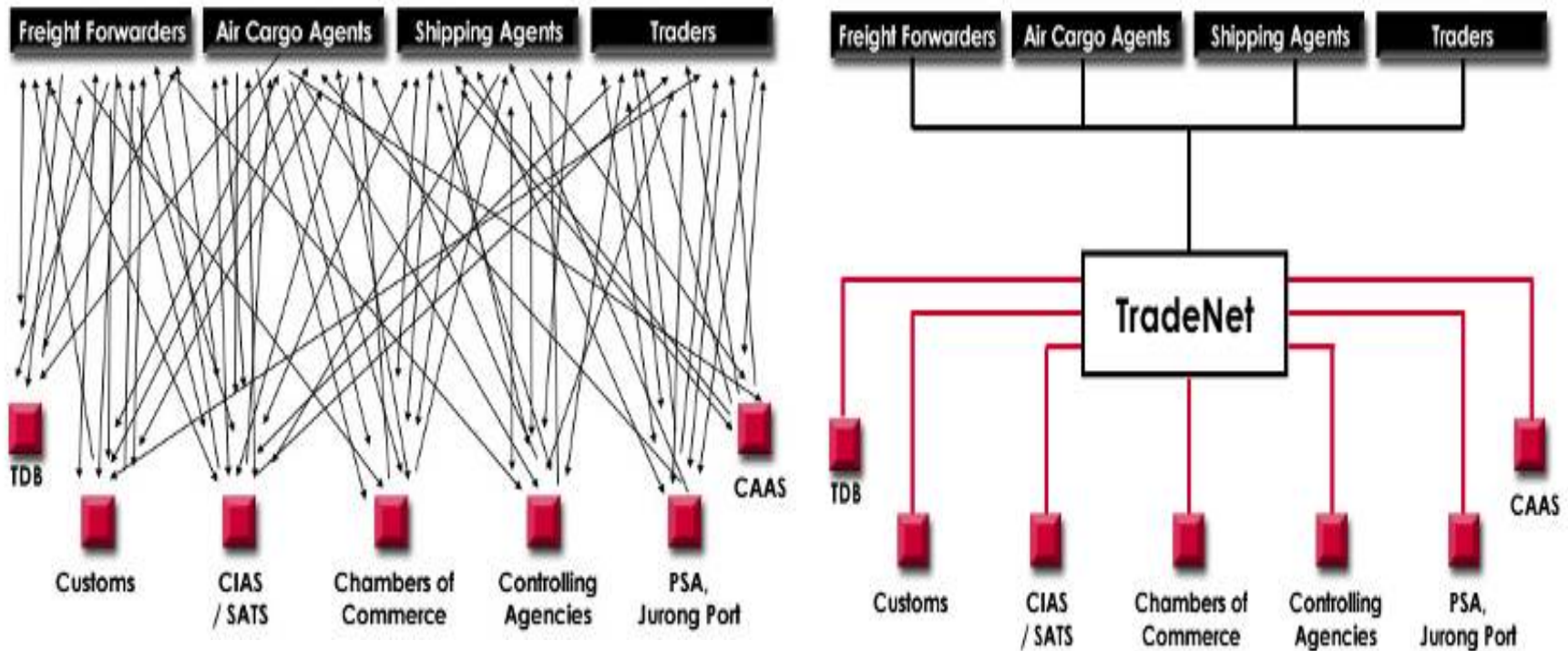
Single Window System - TradeNet

Driving Singapore's External Economy

Information on this slide is confidential and strictly for use by IE Singapore officers only. It should not be used or referred to by third parties without prior written consent from IE Singapore.



TradeNet provides an EDI for all actors to communicate and process 100% of commercial declarations. First national-level commercial documentation system worldwide.



Paper-based trade administration costs the trading community and motivated the move to an EDI system. Government supervision with private sector participation.



1983 – Trade Development Board established

1986 - TDB processed 10,000 documents daily

- > **Growing trade with paper-based trade administration infeasible**
- > Trade administration estimate at 4-7% of trade volume in Sweden.
- > 1% saving in Singapore ~ SGD 1 billion per annum

Institutional Approach -

1. Steering Committee of all relevant CEOs of involved public agencies, associations
2. **Singapore Network Services Pte Ltd** (TDB, SingTel, PSA, CAAS shareholders)

Government commitment with private sector's ability to respond to needs of the market.

2 years to develop, SGD 50 million launched in January 1989. **By 1992, linked 30 public agencies and by 1994, 99% of trade declaration took place through TradeNet.**

Moving away from paper-based administration led to external (Trade) and internal (Organizational) efficiencies.

	Before TradeNet®	After TradeNet®
Processing Time	2 – 7 days	1 minute
Fee	US\$6 – US\$12	US\$2
Number of documents	3 – 35	1
Documents processed	Around 10,000 per day	Around 30,000 per day
Trade Turnover	S\$ 178 b (US\$ 119 b)	S\$ 251 b (US\$ 167 b)
Processing Staff	144	38
Annual Trade Enquiries	45,000	58,000
Documents processed per staff	27,397	105,263
Processing Revenue per staff	S\$ 63,836	S\$ 465,131

Lessons Learned

A port community system is a 'living' system which needs to keep evolving with the changing times

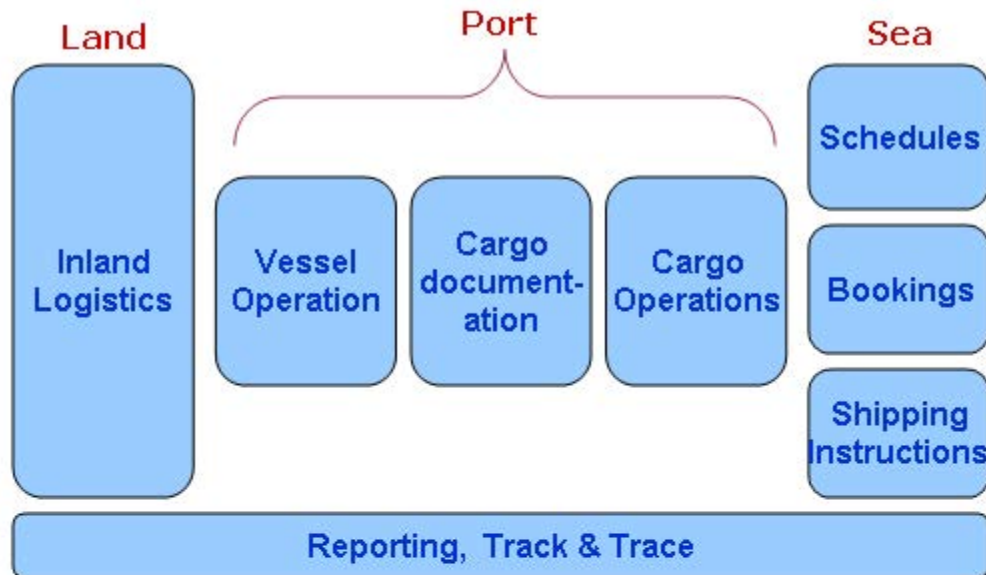
Involvement of the community from the start is important.

Including B2B functions would be a plus point for PCS.

Analyzing the information and gathering Business Intelligence from this information will enable the government to take informed decisions on policy matters

Challenges Faced by the Community

- **Moving from paper documents to “paper less” was tough to adjust.**
- **Process re-engineering brought about new requirements which the community had to learn and comply**
- **Costs involved in adopting to the new system as in-house systems required change or new systems had to be procured**
- **Data harmonisation and developing message standards meant that existing systems had to cater adopt**
- **Increasing user adoption and change management required hand holding users and catering to customised training programs for different users of the community**



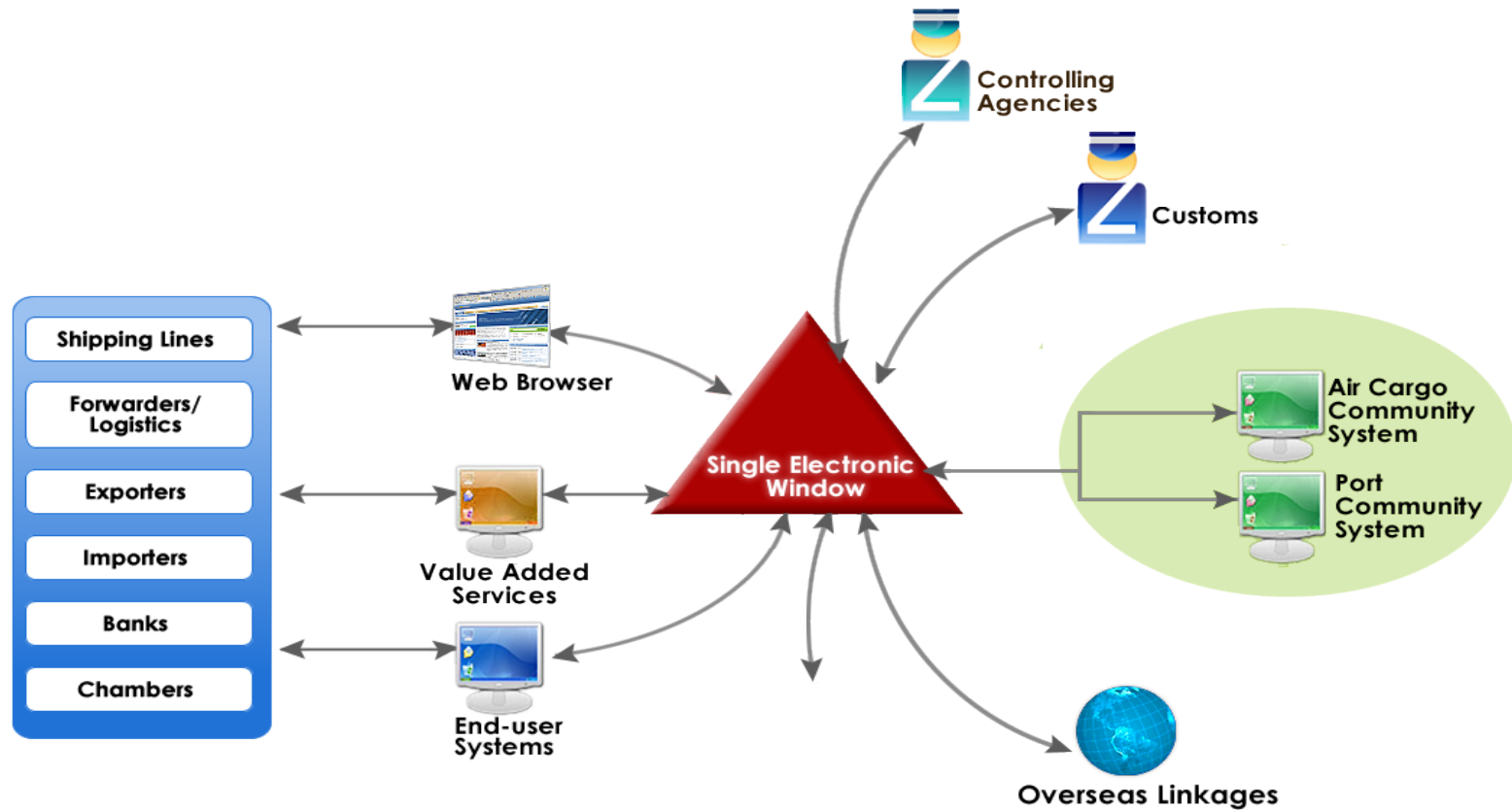
Benefits

- Accurate scheduling of ships arrival & departures leading to reduced turnaround times, reducing congestion
- Saving in operating costs to traders & shippers
- Better utilization of Port's resources through better enhanced ability to schedule
- Reduction in cargo delivery time
- Accurate transaction information
- Higher throughput of cargo and optimized resource utilization

Benefits of PCS & Single Window Integration

- Brings together all parties in the maritime, trade and logistics business allowing speedy data exchange and communication bringing about greater efficiency and productivity for all
- Electronic documentation processing streamlines and improves operational & business transactions
- Availability of real-time data provides the important information necessary for many business decisions across Government departments and Private Sector players
- Paperless processing increases staff productivity
- Savings in cost and effort for the businesses, port community and Government
- Facilitates B2G & B2B information exchange

PCS & SW Integrated Environment



Driving Singapore's External Economy

Information on this slide is confidential and strictly for use by IE Singapore officers only. It should not be used or referred to by third parties without prior written consent from IE Singapore.



Thank You

www.iesingapore.com

Driving Singapore's External Economy

Information on this slide is confidential and strictly for use by IE Singapore officers only. It should not be used or referred to by third parties without prior written consent from IE Singapore.

